

Ethernet Bridge and E3 / T3 Converter E3 / T3

CV E3T3 - TTX**Characteristics
advantages**

- Transport of Ethernet over an E3 or T3 link
- Combo product for both E3 and T3
- Ethernet 10 / 100 BaseT interface with automatic detection, auto MDIX
- E3 : G703 34,368 Mbps +/- 20 ppm
- T3 : DS3 / DSX-3, 44.736 Mbps +/- 20 ppm
- Recent technologies of clock control and jitter attenuators
- Compact standalone enclosure or 19" rack mount card
- User selectable network speed E3 or T3 via easy menus
- Jitter attenuators: ETSI TBR-24, Bellcore GR499
- Ethernet filtering bridge with 2,000 MAC addresses memory and 284 Ko Ethernet frame buffer
- Flow control : 802.3x
- Very easy to operate: intuitive VT100 menus, Windows™ graphical software
- Local and remote management through TCP-IP protocols
- SNMP management : TRAP and configuration
- Fault / Alarm propagation on Ethernet Link and E3/T3 AIS
- Temporized alarm relay
- Embedded 2E15 BER Test
- Standalone enclosure with a choice of 110-230 Vac mains or 48 Vdc supply
- 19" rack mount card for AMS chassis

E3 / T3 INTERFACE CONVERTER TO ETHERNET

The **CV-E3T3** is an Ethernet bridge with an E3 – 34.368 Mb and T3 – 44.736 Mbps interface. It transports Ethernet traffic over a point to point, or a carrier network in an E3 or T3 trunk.

The **CV-3T3** fulfills corporate expectations for interconnecting their facilities, but also Internet and microwave carrier requirements.

The **CV-E3T3** fits industrial and carrier applications thanks to its various packaging as a standalone enclosure or a 19" rack mount card both with a choice of 110-230 Vac mains or 12-36 / 36-72 Vdc power supplies.

The **CV-E3T3** embeds a dual purpose E3 and T3 interface. It makes easy logistic for international applications on North America and European networks.

The **CV-E3T3** is a Store & Forward Ethernet bridge with high performance and level 3 and higher protocol transparency.

The **CV-E3T3** provides many management functions and fault / alarm propagation over Ethernet (Link) and E3/T3 (AIS)

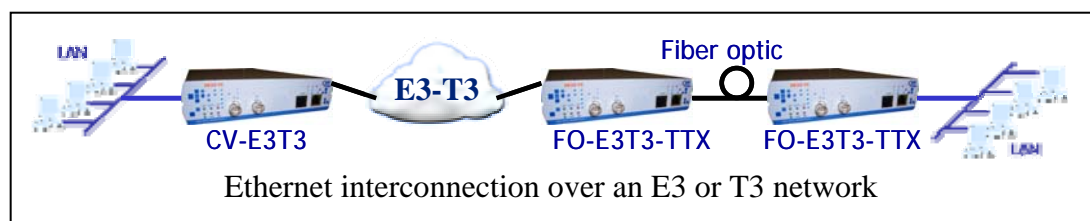


The **CV-E3T3** displays diagnostics and statistic information over several time intervals of the last 24 hours. An alarm relay can control an external device in case of loss of signal for more than a defined delay.

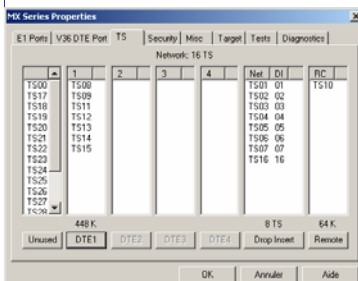
The **CV-E3T3** is very easy to operate thanks to its graphical software running over Windows™. The **CV-E3T3** is controlled from its local RS232 port, or from the Ethernet / IP network in Telnet or SNMP protocol.

The **CV-E3T3** can be installed as a desktop box, or in a CXR 19" AMS chassis.

The **CV-E3T3** works with the **FO-E3T3** fiber optic modem which extends an E3/T3 link over long distances.

APPLICATIONS

The CV-E3T3 transports an Ethernet traffic over an E3 or T3 link or network. The link is transparent to the Ethernet traffic and the upper protocols. Operation is very quick and easy. The peer end might be equipped with another CV-E3T3, but also with a couple of FO-E3T3 fibre optic modems if the E3/T3 network access point was far from the Ethernet network which would make some fault and / or cost increase with a coax cable.

E3 / T3 converter**10 / 100 Mbps Ethernet bridge**

MXCFG : Windows™ graphical software for controlling the CV / MX products



SPECIFICATIONS

E3 Interface

- G703 transparent
- Coding : HDB3
- Rate : 34.368 Mbps +/- 20 ppm
- Phase jitter : G.751, G.752, G.755 and attenuator ETSI TBR-24
- Sensitivity : 12 dB loss
- Clocking : internal, E3/T3 network receive
- Impedance : 75 Ohms, BNC connectors
- Insulation : 1500V as per ITU-T K20 and K21

TE Interface

- Coding : B3ZS
- Signal pulse : DSX-3, GR253, ANSI T1.102
- Rate : 44.736 Mbps +/- 20 ppm
- Phase jitter : Bellcore GR499
- Sensitivity : 12 dB loss / 1,000 ft cable length
- Clocking : internal, E3/T3 network receive
- Impedance : 75 Ohms, BNC connectors
- Insulation : 1500V as per ITU-T K20 and K21

Ethernet Interface

- Rate : 10 / 100 MBPS
- Interface : 10/100 BaseT, IEEE 802.3
- Automatic speed 10 / 100 Mbps
- Automatic mode : MDIX
- Connector : RJ45 with Speed et Link/Act leds
- Ethernet bridge
- Automatic address filtering : 2,000 address memory
- Store & Forward mode
- Encapsulation : HDLC
- Frame buffer : 400 Ko

Console Port

- RS232 / V24/V28, 8 data, 19,2 Kbps
- AT commands or VT100 intuitive menus
- RJ45 connector and dB9 adaptation cable

Led Indicators

- Power / management
- Test : Loop test, BER test
- ERR : error during a loop or BER test
- E3/T3 : good signal from the E3/T3 interface
- AIS : AIS alarm detection at the E3/T3 interface
- On the Ethernet RJ45 connector :
 - Speed : 100 Mbps
 - Link / Act : Ethernet LAN connection status and Ethernet frame transmission / reception

Management

- From the local RS232 console port : AT commands, easy , intuitive VT100 menus
- Windows™ based configuration software – MX-CFG : configuration editing and backup, test control, firmware update.
- Diagnostics : loop test, 2E15 BER test, PING
- Local and remote management from Ethernet / IP : Telnet client and server, SNMP, FTP for firmware update.
- Statistics over 24 hours, 1 hour and 15 minutes : E3/T3 and Ethernet interface status, error seconds on Ethernet and E3/T3, AIS seconds, Ethernet frame counters
- Alarm and critical event log
- AIS alarm and Ethernet link status propagation : auto Ethernet link down mode
- Temporized alarm relay

Power Supply

- Internal 110-230 Vac : CV-E3T3-I
- Internal 48 Vdc (36 – 72 Vdc) : CV-E3T3-C

Environmental

- Size: 260 x 170 x 35 mm (PxLxH)
- Weight : 0.8 kg
- Operating temperature: -10 to +50 °C
- Hygrometry : 10 to 90%, non condensing
- CE mark : EN-60950, EN-55022, EN-55024

ORDERING INFORMATION

- | | |
|-------------------|---|
| CV E3T3 – TTX – I | Ethernet bridge and E3-34 Mbps / T3-45 Mbps interface converter standalone enclosure with embedded 110-230 Vac power supply |
| CV E3T3 – TTX – C | Ethernet bridge and E3-34 Mbps / T3-45 Mbps interface converter standalone enclosure with embedded 48 Vdc (36-72) power converter |
| CV E3T3 – TTX – R | Ethernet bridge and E3-34 Mbps / T3-45 Mbps interface converter Rack mount card for CXR AMS 19" chassis |

Information contained in this document are not contractual. Concerned in constantly improving its products, CXR AJ reserves its right to modify specifications without notice.



Rue de l'Ornette
28410 Abondant
France
Tel : +33 (0) 237 628 790
Fax : +33 (0) 237 628 801
Email : trans@cxr.fr